



Turnerhall Tech Pack (<http://pabsttheater.org/techpacks/turner>)

Contacts

Gary Witt (General MGR./Promoter)
414-286-8302 off.
414-737-3263 cell
414-286-2154 fax
gwitt@pabsttheater.org

Marc Solheim (Venue MGR.)
414-286-5407 off.
414-737-8451 cell
414-286-2154 fax
msolheim@pabsttheater.org

Matt Beringer (Assist. MGR./Talent Buyer)
414-286-8384 off.
414-333-6634 cell
414-286-2154 fax
mberinger@pabsttheater.org

Hannah Maki (Box Office MGR.)
414-286-6126 off.
414-286-3203 fax
hmaki@pabsttheater.org

Sasha Molin (Operations MGR.)
414-286-5426 off.
734-274-1767 cell
414-286-2154 fax
smolin@pabsttheater.org

Bryan Conti (FOH/Bar Operations)
414-839-1608 cell
414-286-2154 fax
bconti@pabsttheater.org

Advance Contacts

Cassie Bauman (Catering/Hospitality)
414-617-9134 cell
414-286-2154 fax
cbauman@pabsttheater.org

Eric Hess (Production MGR/LD)
262-565-3792 cell
414-286-2154 fax
ehess@pabsttheater.org

Contents

1. Contacts	pg 1
2. Overview	pg 2
3. Floor Plan	pg 3
4. Stage Dimension	pg 4
5. Dressing Rooms	pg 5
6. Accommodations	pg 6
7. Catering	pg 7
8. Misc	pg 8
9. Audio	pg 9
10. Lighting	pg 10
11. Directions	pg 11
12. Parking/Loadin	pg 12

Turner Hall Overview

Since 1853, the Milwaukee Turners have played a central role in Milwaukee's civic and cultural life. The Ballroom has undergone a special renovation, using the Brooklyn Academy of Music Majestic Theatre as a model, partly restoring The Ballroom to achieve a “modern ruin” look.

Theater Location:

1040 N. 4th Street, Milwaukee, WI 53203

Mailing Address:

144 E. Wells St. Milwaukee WI 53202

To Purchase Tickets Call

(414) 286-3663 or (800) 511-1552 every day 9 a.m. to 9 p.m.



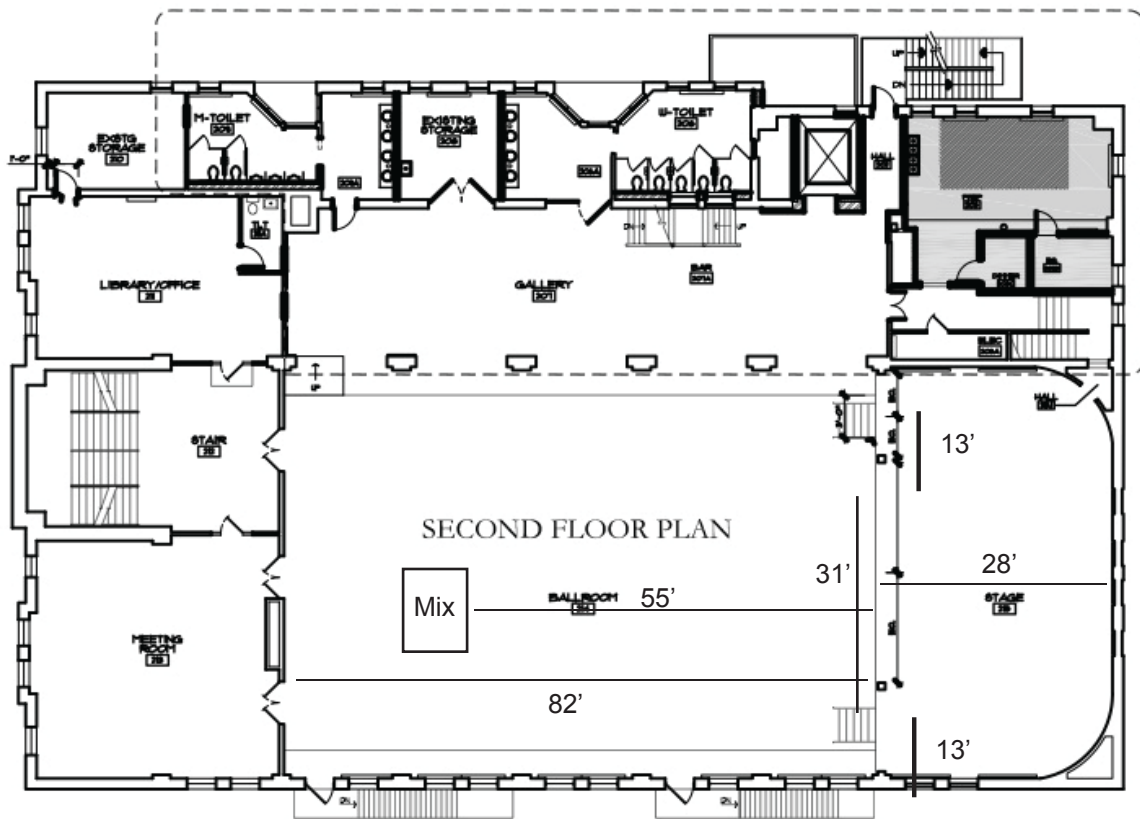
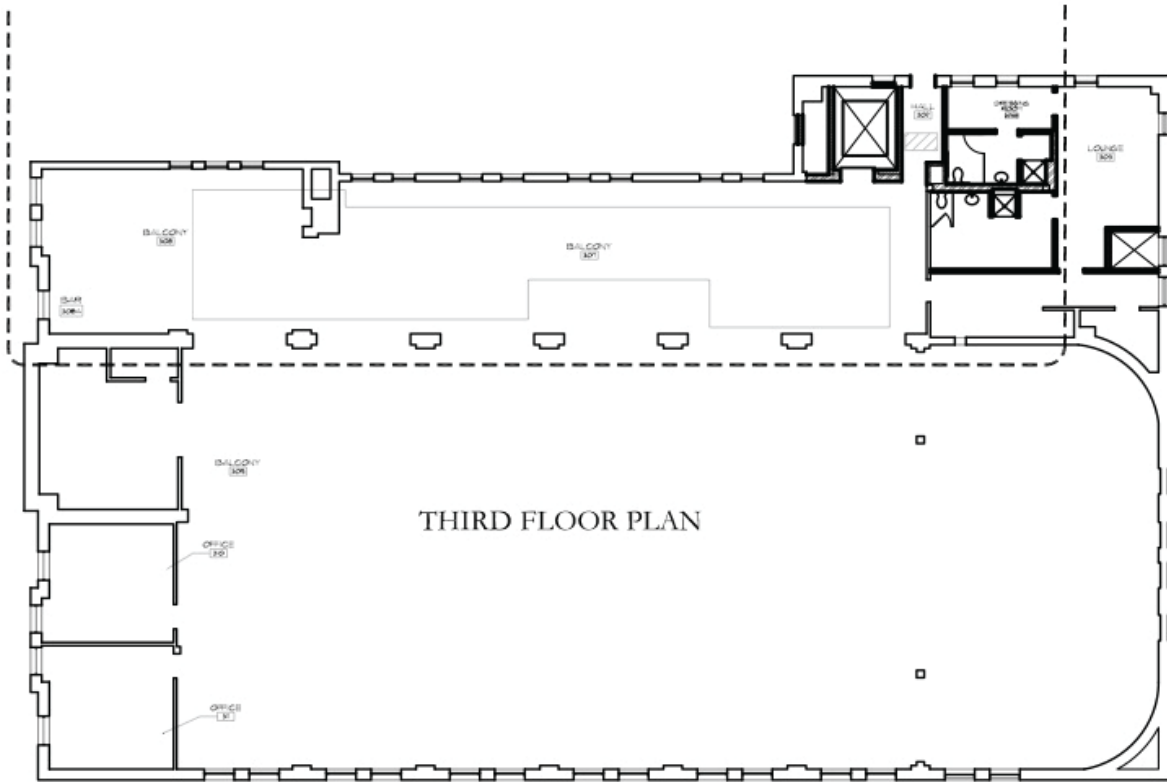
Box Office Window Hours:

Noon-6:30 p.m. Monday–Friday @ Pabst and Riverside and two hours before scheduled start times of events at Turner Hall.

Turner Hall Ballroom is a two-story, 7,000-plus square feet space with a 31-foot by 56-foot raked stage on the east end and an expansive balcony that sweeps around the west and north ends. Since the late nineteenth century, the Ballroom has played host to a wide range of social, cultural, and political events. Turner Hall was a showplace for the panoramic painters and other German immigrant artists who dominated the Milwaukee art scene until the 1920's and throughout the early 1900's; Milwaukee residents visited this space for weekly concerts, dances, gymnastic competitions and theatrical presentations.



Turner Hall Floor Plan



Turner Hall Stage Dimensions



Proscenium Height 16'



Turner Hall Dressing Rooms

Large central gathering area
2 separate shower areas, (with 1 handicapped shower)
Presently no phones for dressing rooms or production office
WIFI Net: PRT-Production Pass: pabst414



Riverside Accommodations



All hotels have \$10/day state entertainment tax not included on the pricing below.

All hotels subject to variable rates due to demand.

The Pfister Hotel \$149/night

424 E Wisconsin Ave
Milwaukee, WI 53202
800-323-7500 phone
414-273-5025 fax
www.thepfisterhotel.com

InterContinental \$139/night

139 E Kilbourn Avenue
Milwaukee, WI 53202
414-276-8686 phone
414-276-8007 fax
www.intercontinentalmilwaukee.com

Hilton \$109/night

509 W. Wisconsin Avenue
Milwaukee, Wisconsin 53203
414-390-1894 phone
414-271-8841 fax
juliegahl@marcushotels.com
www.hiltonmilwaukee.com

Best Western Inn Towne Hotel \$79/night

710 N Old World 3rd Street,
Milwaukee, Wisconsin, 53203-2004
Phone: 414-224-8400
Fax: 414-224-8696

Aloft \$137/night

1230 N Old World 3rd Street,
Milwaukee, Wisconsin, 53212
Phone: 414-226-0122
Fax: 414-224-0133

Catering

Our catering staff is dedicated to healthy and fresh food for your backstage experience. We work with specifically chosen local restauranteurs, who provide for us menus that are created especially for your Turner backstage dining experience. Please contact our catering department to arrange your backstage dining experience.



Speed Queen

This is, hands down, the best soul food you will find here in Milwaukee. Featuring BBQ Pork Shoulder and Ribs as their most popular items. This would be the best option for our meat eaters out there. They also make up an amazing batch of Mac N Cheese as a veggie option.



Maxie's Southern Comfort

Southern inspired "from-scratch" cooking includes the "Low Country" cooking of the Carolinas, Creole, and Cajun cooking of Louisiana, traditional slow-smoked southern food, and southern comfort cooking of all kinds. Their delicious Jambalaya can also be made into a Vegetarian Jambalaya replacing the meat with tofu.



Buca Di Beppo

Buca di Beppo is an authentic Italian restaurant that offers flavorful Italian dining. Some menu items include: Fettuccine Supremo: Tender chicken breast, broccoli, sweet red bell peppers and imported Italian egg fettuccine tossed in our creamy Alfredo sauce. Linguine Frutti Di Mar: Shrimp, baby clams, mussels and calamari tossed with our spicy red clam sauce and imported Italian linguine.



Misc Milwaukee Business

Doctor

Dr. Dan Sicker Mobile 414-915-2151

Limo Services

Carey
3250 E Layton Ave Cudahy, WI 53110-1403 (414) 482-9950

Signature Limousine Service
9675 S. 54th St. Suite 4 Franklin WI 53132 (414)421-3120

Milwaukee Cabs

Yellow Cab
1840 N Dr Martin Luther King, Milwaukee, WI - (414) 271-1800*

American United
646 S 2nd St, Milwaukee, WI - (414) 220-5000*

Airport Connection
5300 S Howell Ave, Milwaukee, WI - (888) 267-9848*

Chiropractors

Chiropractic Co.
2332 N Farwell Ave, Milwaukee, WI - (414) 223-4550*

Down Chiropractic
Ste 402, 600 E Mason St, Milwaukee, WI - (414) 272-7250*

Massage Therapist

Invivo Wellness
Victoria McShane - victoriaray@gmail.com, (414) 899-8620

Thai Bodywork Massage
Michelle Warren RYT- missesmichelle@gmail.com, (414)899-2700

Dry Cleaning

Martinizing Dry Cleaning
285 E Hampton Ave Milwaukee, WI 53217 (414) 964-4747

Carriage Cleaners
777 E Wisconsin Ave Milwaukee, WI 53202-5300 (414) 282-7483

Turner Hall Audio Equipment

Sam Donoghue

FOH

262-224-4680

sdonoghue@pabsttheater.org

FOH

- (1) Midas XL3 40 inputs
- (6) Martin F2
- (4) EAW SB528
- (3) Crown Macrotech 5000
- (1) Crown Macrotech 3600
- (2) Crown Macrotech 2400
- (2) XTA DP 226 processors
- (1) Whirlwind 32x8 split snake
- (2) Klark Teknik DN 360
- (2) Drawmer DS 404 quad gate
- (2) Drawmer DL 441 quad comp
- (1) Roland SDE 330
- (1) TC Electronics M1
- (1) Yamaha SPX900
- (1) Denon DN-C635 CD player
- (2) EV SXA 250 Powered front fill



Monitors

- (1) Yamaha PM4KM
- (5) Klark Teknik DN360
- (9) Crown MA 24x6 w/PIP cards
- (6) Martin LE400P
- (4) Martin LE400PA

Microphones

- (6) SM58
- (1) Beta 58
- (9) SM57
- (2) Beta 52
- (1) Beta 91
- (4) SM81
- (4) KSM 109's
- (4) Sennheiser e604
- (2) Sennheiser e609
- (4) J48's
- (4) Whirlwind IMP Direct Boxes
- (1) Behringer Ultra DI 100

1930's George Steck baby grand piano available
requires tuning \$110 for each day.

All sound on a 100 amp circuit
No Power tap available

All recording requires 5 days advance notice:
\$100 for a 4 Trk Recording (stereo board and stereo
audience) on Pro Tools 003
\$550 for 64ch multitrack on Pro Tools HD
All prices per band.

Stands

- (6) Tall Booms
- (8) Tall Straight
- (6) Short Booms
- (5) Short Straight
- No Tripod Stands

Turner Hall Lighting Equipment

Eric Hess

LD

262-565-3792

e Hess@pabsttheater.org

400 amp 3 phase power available with cams

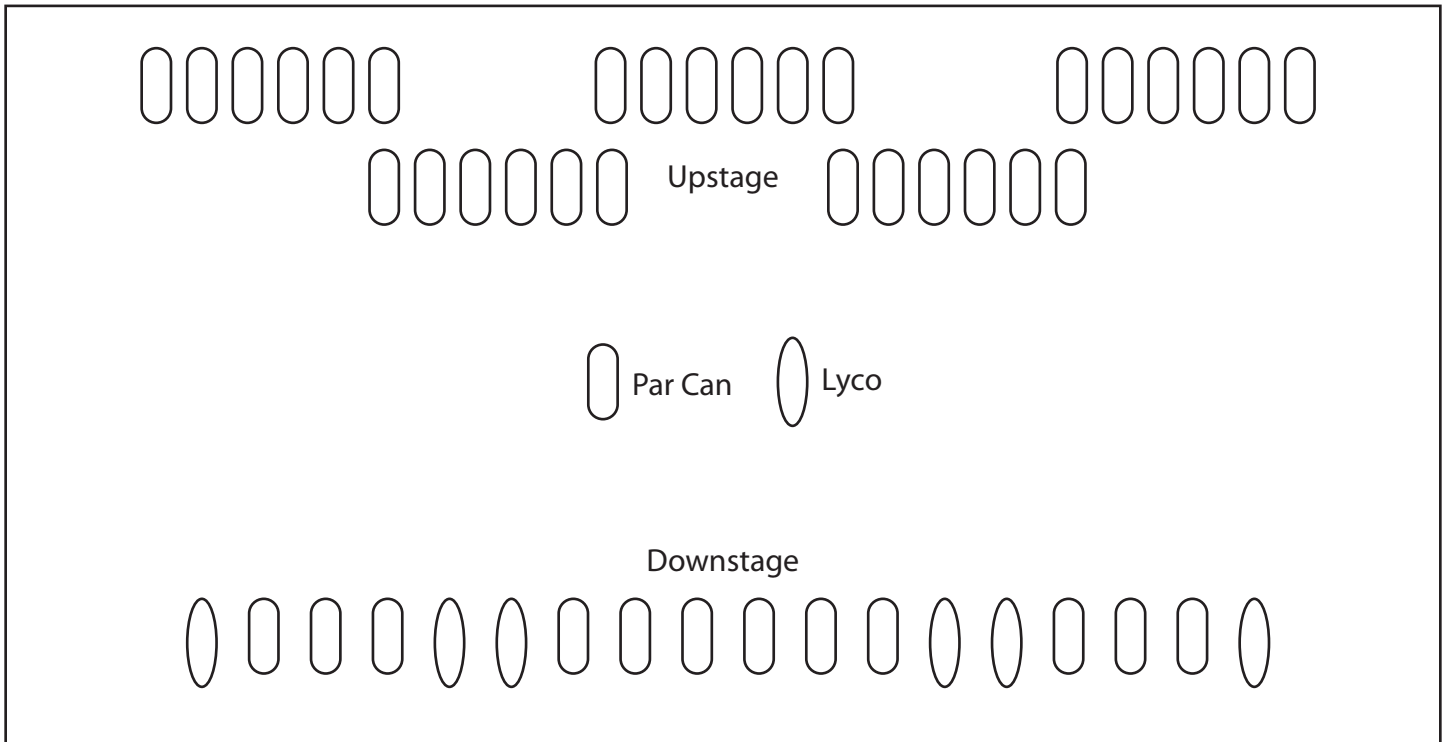
- (6) LB6WLM 6 Circuit Lamp Bar
- (42) Par Cans 12 Downstage 30 Upstage
- (6) Lycos
- (4) ETC Smart Pack ETC Smart Pack 1.2k
- (1) Fullboar Road Hog III Lighting Console
- (3) BO700 Thomas 12x12x10 Downstage Truss

SORRY NO PYRO, BUMP FOCUS ONLY, NO RIGGING POINTS, NO GENIE LIFT



Video Projection available upon request but subject to demand.

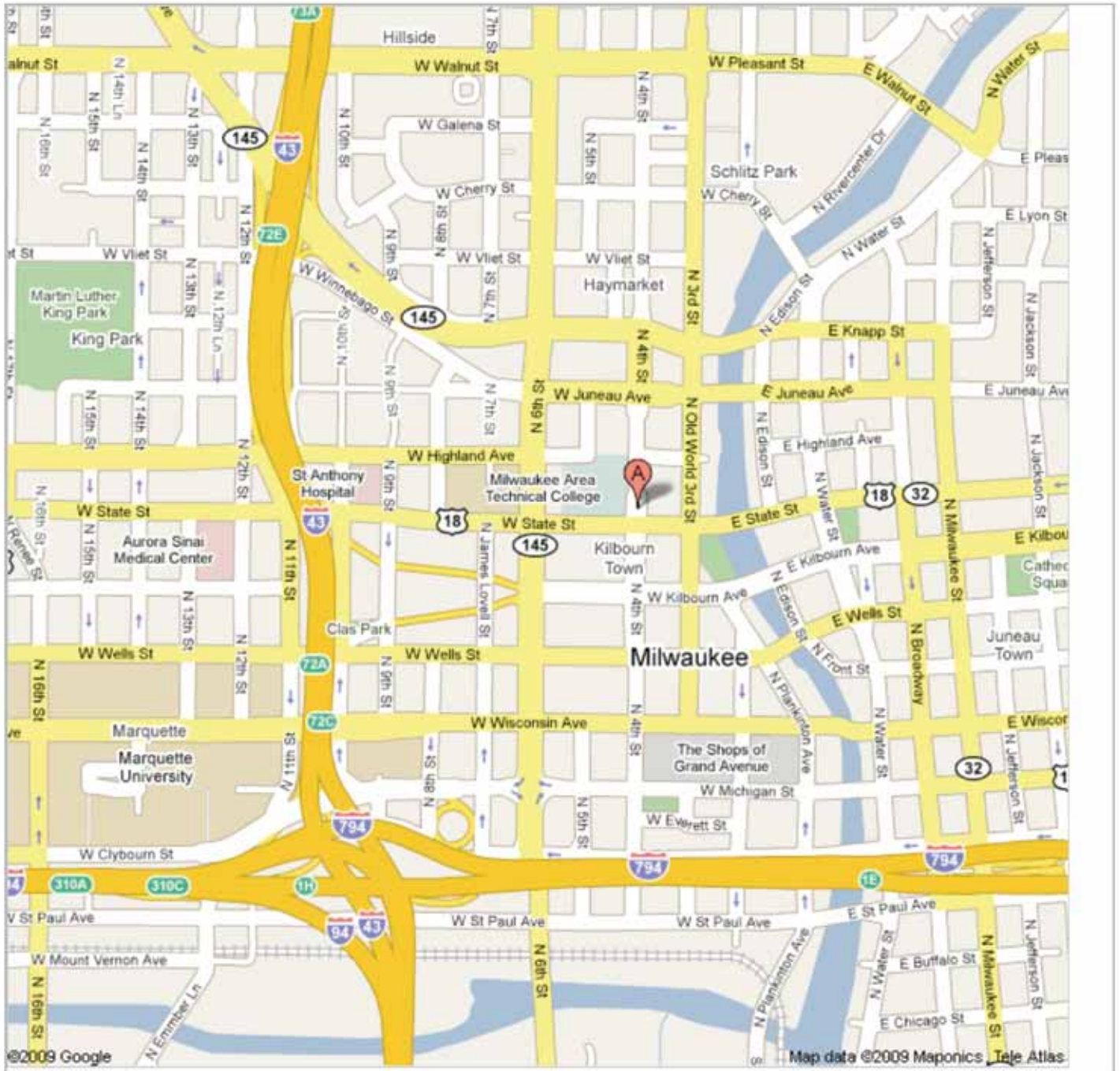
Lighting Plot



Turner Hall Directions

Turner Hall Ballroom
1032 N. 4th Street.
Milwaukee, WI 53203

<http://maps.google.com/maps?client=safari&q=1034+N.+4th+Street,+Milwaukee,+WI+53203&oe=UTF-8&ie=UTF8&split=0&gl=us&ei=wn-9SfetJNzimQfQyNGgDg&ll=43.043331,-87.915881&spn=0.008625,0.019162&z=16&iwloc=addr>



Turner Hall Parking/Loadin

Parking: █

Parking is located on Highland Ave. between 4th St. & Old World 3rd. This is on the bagged meters with which a permit will be given to you at loadin on the north side of the building. NO OVERNIGHT PARKING FROM 2AM-6AM

Loadin: █

