



1/1/2016



Table of Contents

GENERAL INFORMATION	3
Address	3
Telephone (see Pabst Telephone Contact Sheet on page 15)	3
Personnel	3
Business Hours	3
STAGE SPECIFICATIONS	4
Stage	4
Forestage	4
Orchestra Pit	4
Basement Level (See Catering & Hospitality Section).....	4
Dressing Rooms (Also see Catering & Hospitality Section)	4
TRANSPORTATION SPECIFICATIONS	5
Touring Coach & Van Parking and Shore Power	5
Truck and/or Van Loading	5
Directions to Pabst Theater (NEW DIRECTIONS!! Wells Street is now a two-way street, you GPS may not show this correctly!)	5
STAGE EQUIPMENT	6
Rigging.....	6
Stage Draperies	6
Orchestra Equipment.....	6
STAGE RIGGING BATTEN SCHEDULE	7
THEATER AUDIO SYSTEMS	8
Public Address Sound System (FOH)	8
THEATER AUDIO SYSTEMS	9
Stage Monitor Sound System	9
THEATER LIGHTING SYSTEM	10
Control.....	10
Dimming	10
Distribution	10
Other	10
THEATER LIGHTING INVENTORY	11
THEATER COMMUNICATIONS SYSTEMS	12
Telephone System	12
THEATER COMMUNICATIONS SYSTEMS	13
The Internet.....	13
Production Communications	14
THEATER SATFF CONTACT NUMBERS	15
PABST SEATING PLAN	16
PABST STAGE PLAN	17
PABST STAGE SECTION VIEW	18
PABST STAGE CIRCUIT PLAN	19
PABST BASIC LIGHTING HANG	20
PABST RIGGING STEEL PLAN	21
PABST THEATER EXTERIOR PHOTOS	22-24
PABST THEATER CATERING & HOSPITALITY	25-28



GENERAL INFORMATION

The Historic Captain Frederick Pabst Theater, a National Historic Landmark, was built in 1897 by the brewing magnate Captain Frederick Pabst. It was designed by architect Otto Strack in a Victorian style with baroque decoration. The 1339 seat auditorium is drum shaped with two balconies, the Mezzanine and the Gallery. Decorated in reds and maroons with gold and silver accents, the theater was extensively renovated in 1928, restored 1976, and renovated again in 1989 and 2001, making it one of the most beautiful theaters in the United States. During the 1989 renovation, the Pabst Theater was interconnected with the new, \$120 million Milwaukee Center development (which includes the Milwaukee Center office tower, Intercontinental Hotel, and the Milwaukee Repertory Theater). The 2001 renovation added an expansive Pub and additional lobby amenities and elevators making all floors handicapped accessible. These amenities, combined with a full proscenium stage including a hydraulic orchestra pit, state-of-the-art lighting and sound system make the theater suitable for virtually all performing arts including theater, opera, dance, and music as well as being perfect for weddings, meetings, receptions and other business applications. Pay parking is available in the Milwaukee Center below the theater complex, at the BMO-Harris Bank on the SE corner of Wells & Water Streets, and many nearby surface parking lots and parking meters.

Address:

Pabst Theater
144 East Wells Street
Milwaukee, Wisconsin 53202

Website; <http://www.pabsttheater.org>

Telephone: (see Pabst Telephone Contact Sheet on page 15)

Pabst Business Office:	(414) 286-3665
Pabst Business Office Fax;	(414) 286-2154
Pabst Theater Box Office:	(414) 286-3663
Pabst Production Office;	(414) 286-2239
Pabst Production Fax;	(414) 286-0807
Travelling Production Office	(414) 286-0619
Travelling Production Fax	(414) 286-0614 (if provided by touring company)

Personnel:

Executive Director:	Gary Witt	gwitt@pabsttheater.org
Talent Buyer/Rentals:	Matt Beringer	mberinger@pabsttheater.org
Production Manager:	Robert Zenoni	rzenoni@pabsttheater.org
Master Electrician:	Jim Fyksen	jfyksen@pabsttheater.org
Box Office Manager:	Hannah Maki	hmaki@pabsttheater.org
House Manager:	Christine Segady	csegady@pabsttheater.org
FOH/Bar Manager:	Brian Conti	bconti@pabsttheater.org
Hospitality/Catering Mngr:	Paul Smaxwill	psmaxwill@pabsttheater.org

Business Hours:

Pabst Business Office:	Monday-Friday	8:00 a.m.-6:00 p.m.
Pabst TheaterBox Office:	Monday-Friday	12:00 p.m. – 6:00 p.m. & 2 hours prior to show



STAGE SPECIFICATIONS

Stage:

Width: (wall to wall)	69' 3-1/2"	Depth (from forestage):	43' 2-1/2"
Proscenium Width:	35' 1/2"	Height (to grid):	70'-4"
Proscenium Height:	21'	Stage Floor;	Wood, smooth, soft, plywood, black, screwable

Forestage:

Width (Proscenium opening):	35' 1/2", (32'-0" w/speaker stacks in place)
Depth (Front edge to plaster line):	3'1"
Stairs from audience to stage are available at left-center and right-center aisles, but obstruct rows A and B when Orchestra Pit is at stage level.	

Orchestra Pit:

A hydraulic lift which can be set at any level between basement and stage. Can be used as a forestage, pit or audience seating area. The Lift is NOT capable of being moved during show due to safety and liability concerns.

Width:	33' 9-1/2"
Depth:	(Front edge center to edge of forestage) 9' 6-1/4"
Travel Distance	(Basement level to stage level) 10'
Pit Floor:	Soft, smooth, plywood, painted black, screwable

Basement Level: Located beneath stage, used as the main dressing room area catering/hospitality area.
(See Catering & Hospitality Section)

Width:	48'
Depth:	35'
Height:	7' 4-1/2"
Loading door from hydraulic lift (pit) to basement:	6' 1'w x 6' 5"h
Access to stage via stairs DSR & DSL.	
Access to house via basement passageway to lower lobby. This access is locked during shows.	

Dressing Rooms: Total of 7 dressings rooms are located in the following areas;
(Also see Catering & Hospitality Section)

Lower Level:	1 @ catering set-up room 1@ Touring Production Office, (w/tables and chairs, phones, etc.) 1 @ 9 person DR, with sink, dressing tables, and mirrors, NO restroom or shower 2 @ 12 person, x2 sink, x1 dual toilet restroom, x1 single stall shower
Stage Level:	1 @ 1 person with toilet, sink, table & mirror, in the Stage Left Wings
2nd Floor:	1 @ 2 person with toilet, sink, table & mirror, in the Stage Left Wings
3rd Floor:	1 @ 2 person with toilet, sink, table & mirror, in the Stage Left Wings



TRANSPORTATION & LOADING SPECIFICATIONS

Touring Coach & Van Parking with Shore Power;

The Pabst Theater can accommodate parking for up to (2) full size touring coaches in the north lane of Wells Street, facing east or west, along the sidewalk, adjacent to the theatre. The parked vehicles must stay clear of the Theater lobby doors. Two (2)- 50 amp shore power circuits are available within 25 feet of coach parking lane to support two touring coaches. Combination to locks provided upon arrival. (See photos at end of document)

Truck and/or Van Loading:

The Pabst Theater loading zone is located between the Pabst Theater and a building to the west of the Pabst. Due to the width of Wells street, the time of day, the traffic patterns and metered parking across the street, some 48' or larger tractor/trailers may not be able to back into the loading "alley" easily. In those situations, trucks and vans will have to be street parked and unloaded/loaded. Trucks in the loading zone may be asked to detach the tractor and move for show time, as it may block the sidewalk to the theater. (See photos to follow)

The loading zone or "alley" is at street and/or stage level behind theater directly off of Wells Street (a major, 4-lane, East-West street) and can accommodate one tractor-trailer at a time. The alley is 18'-0" wide. A ramp or liftgate is essential for loading and unloading. There are no stairs or ramps between truck unloading and stage. Prior arrangements must be made for forklifts and lift trucks. The Loading Roll-up door USL (northwest corner) is approximately 7'-2" w X 11'-6" h. (See photos at end of document)

Directions to Pabst Theater:

These directions are for touring coaches so that they are facing in the proper lane direction when parked. If you wish to park coaches in the reverse direction a more direct route should be taken. Tractor-trailers and other trucks may choose to take a more direct route to allow easier backing in to the loading zone. (Photos at end of document)

From Chicago (traveling North); Travel I-94 to downtown Milwaukee. Stay in right lane as you are entering downtown area. This lane will transition into exit 310C on the right, which is I-794 eastbound. At the end of this long exit ramp, stay to the right on Exit 1D and you will be on Plankinton Ave. heading North. Proceed north thru the Wells Street intersection and turn to the right (east) at the next intersection which will be Kilbourn Ave. Proceed one block and turn right (south) at Water St. and proceed one block to Wells St. The Pabst is on the right (west) of Water St. at the corner of Wells St. Turn right on to Wells St. Parking is in front of theater in the right traffic lane. Bus power is strapped to the last column and labeled "shore power". Parking permits will be provided for display in window of vehicles. Park the first bus as far forward as possible, with the front of the bus at the concrete light pole near the curb on the right. Push-outs/Slide-outs cannot be used. **TRUCKS MUST BACK IN TO THE LOADING ZONE PRIOR TO PARKING THE TOURING COACHES!! DO NOT PARK WEST OF CONCRETE LIGHT POLE AT CORNER OF LOADING ZONE.**

From Madison (traveling East); Travel I-94 into downtown Milwaukee area, staying in right lane. Exit in right lane to exit 310B to I-43 North. As exit transitions to I-43 northbound, take exit 72C on right into Kilbourn Avenue tunnel. At end of tunnel, stay straight onto Kilbourn Ave. and proceed to Water St. Turn right (south) at Water Street and proceed one block to Wells St. The Pabst is on the right (west) of Water St. at the corner of Wells St.. Turn right on to Wells St. Parking is in front of theater in the right traffic lane. Bus power is strapped to the last column and labeled "shore power". Parking permits will be provided for display in window of vehicles. Park the first bus as far forward as possible, with the front of the bus at the concrete light pole near the curb on the right. Push-outs/Slide-outs cannot be used. **TRUCKS MUST BACK IN TO THE LOADING ZONE PRIOR TO PARKING THE TOURING COACHES!! DO NOT PARK WEST OF CONCRETE LIGHT POLE AT CORNER OF LOADING ZONE.**

From Green Bay (traveling South); Travel I-43 into downtown Milwaukee. Exit 72E on right to Highland Ave exit. And continue straight thru State St. to Wells St. Turn left (east) on Wells Street and travel east to 6th Street. Turn left (north) on 6th Street and travel north to Kilbourn Ave. Turn right (east) on Kilbourn Ave. and travel to Water St. Turn right (south) at Water St. and proceed one block to Wells St. The Pabst is on the right (west) of Water St., at the corner of Wells St. Turn right on to Well St. Parking is in front of theater in the right traffic lane. Bus power is strapped to a column and labeled "shore power". Parking permits will be provided for display in window of vehicles. Park the first bus as far forward as possible, with the front of the bus at the concrete light pole near the curb on the right. Push-outs/Slide-outs cannot be used. **TRUCKS MUST BACK IN TO THE LOADING ZONE PRIOR TO PARKING THE TOURING COACHES!! !! NO PARKING WEST OF CONCRETE LIGHT POLE!**



STAGE EQUIPMENT

1/1/2016

Rigging;

The Pabst Theater stage is equipped with a counterweight rigging system, which is controlled via a locking rail located stage left on the stage level. There are 32 battens, 42'-0" to 45'-0" long, located on approximately 12" centers. The stage is equipped with 5 overhead electrics and there are 3 permanent orchestra shell ceilings located on these battens. Please refer to stage line plot for specific electric and ceiling locations.

Stage Draperies;

- (1) Main Curtain, gold velour, guillotine only, stage right, **WILL NOT MOVE WITH FLOWN LOUDSPEAKERS!**
- (1) Grand Teaser, gold swagged velour, permanently hung under proscenium arch.
- (10) Masking Legs, black velour, unlined, flat, 13'-0" w x 30'-0" h.
- (5) Masking Borders, black velour, unlined, flat, 45'-0" w x 10'-0" h.
- (1) Masking Border (Main Teaser), black velour, lined, flat, 43'-0" w x 14'-0" h.
- (2) Full Traveller Curtain, blk velour, 50% fullness, unlined, 45'-0" w x 30'-0" h, midstage & upstage
- (1) Sky Drop/Cyc, White, flat, Seamless Lino, 45'-0" w x 30'-0" h
- (1) Sharkstooth Scrim, Black, 40'-0" w x 30'-0" h

Orchestra Equipment;

The Pabst Theater is equipped with a 10-panel rolling orchestra shell with 3 flying ceiling panels. Once in place, the orchestra shell stands approximately 20'-0" tall, and provides room for approximately 60 musicians with full percussion section (35'-0" w x 28'-0" d). Associated with the orchestra shell is the following orchestra equipment;

- (60) Orchestra Stack Chairs, metal frame, straight back, red
- (12) Wenger Musicians Chairs, Black, Adjustable
- (65) Manhasset Music Stands, black
- (1) Manhasset Conductor's Wide Music Stand, black
- (30) Music Stand Lights, black, 40W
- (1) Conductor Podium, 3'-0" x 3'-0" x 8" h
- (1) Conductor Podium, 30" x 30" x 10" h
- (1) Conductor Podium, 24" x 24" x 10" h
- (1) 9'-0" Steinway Concert Grand Piano, "D" Model, black
- (1) Piano Bench, Padded, adjustable



STAGE RIGGING BATTEN SCHEDULE

(See page 17 for Stage Plan)

Description	Line Number	Distance from Plaster*	Load (above pipe wt.)
Main Act Curtain (SR)	0	1'-0"	
Grand Teaser	1	1' 2"	700#
1st Electric (36 circuits)	2	2' 8"	700#
2nd Electric (12 circuits)	3	3' 8" (short pipe)	600#
	4	4' 6"	1600#
	5	5' 8"	600#
	6	6' 8"	700#
	7	7' 8"	900#
	8	8' 8"	900#
	9	10' 1"	700#
Orchestra Shell Ceiling	10	10' 8"	1000#
3rd Electric (24 circuits)	11	11' 10"	700#
	12	12' 10"	900#
	14	13' 10"	1300#
	16	14' 6"	700#
Black Traveller	18	15' 8"	700#
	20	16' 7"	700#
	22	17' 7"	700#
Orchestra Shell Ceiling	23	18'-1"	1000#
	24	18' 8"	700#
4th Electric (24 circuits)	26	19' 9"	700#
	28	21' 4"	700#
	29	22'-2"	700#
	31	23'-2"	700#
	33	24'-2-1/2"	700#
	35	25'-0"	700#
Orchestra Shell Ceiling	37	26'-3"	700#
5th Electric (24 circuits)	40	27' 8"	700#
	42	29' 4"	700#
	44	30'-8"	700#
	45	31'-2" (short pipe)	900#
Black Traveller	46	31'-7"	700#
Sky Drop	47	32' 6"	700#
Back Wall		39' 9" (at CL)	

*Plaster line 3' 1" from the edge of the stage.

The stage is also equipped with a hemp rigging system, controlled via the hemp rigging gallery located stage right on the second floor. This system provides the ability to spot single lines as well as 4-line or 5-line hemp battens in between permanently located counterweight rigging battens for specific show requirements.



THEATER AUDIO SYSTEMS

1/1/2016

The public address sound system is comprised of stacked and flown EAW KF-650z/SB600i/SB850F loudspeakers, Crown & Crest amplifiers and an AVID-DigiDesign Venue Mix Rack digital mixing system with Profile control surface. The speaker system is mainly stage stacked with a pair of loudspeakers flown stage right and stage left to cover mezzanine balcony seating for shows with those needs. There is no direct sound coverage of the Gallery (highest) seating level

The Front-of-House mixing position is located at the rear of the orchestra seating, under the balcony, approximately 75' from the plasterline. It is interconnected to the stage via a 56 x 20 copper audio snake. The snake is fully balanced and contains stage communications and video tie lines which terminate in balanced fantails at the mixer and balanced stage box with monitor splitter fantail at the stage and can be used with touring sound systems as well as the in-house system. The snake terminates in the stage right or stage left wings.

The onstage monitor sound system is comprised of a AVID-Digidesigns SC-48 console, EAW SMH200 floor wedge loudspeakers and Crown power amplifiers capable of producing 10 discreet onstage mixes as well as an operator listen mix.

We are also equipped with two channels of Clear-Com production communications in all theater areas; backstage, control booth, trap room/basement, orchestra pit, house and front of house. Headsets, handsets, beltpacks and cables are all available for interconnection for all productions. All production areas and lobby spaces are also equipped with global paging and onstage program monitors with individual volume controls.

The sound system is powered with a 120/240 VAC, 100A, 3 phase, 5-wire company switch (with isolated ground), for the interconnection of road sound systems. Power tie-ins can be performed by house staff and no special provisions need be made. Cam-Lok connectors are available at stage level in the stage right wings for simple power interconnection.

Cudahy's Irish Pub, located adjacent to our main lobby, is equipped with the ability to play iPod background music as well as to have 2 channels used for public address. The Pub can also be fitted with a 12'w x 8'd stage and PA for small musical events or business presentations.

The following list comprises the Front of House and Stage Monitor systems inventories and may change on a per-show basis. Please contact the us for available quantities and specific equipment.

Public Address Sound System (FOH);

Control/Playback:

- (1) Digidesigns Venue Mix Rack with Profile Digital Control Surface, Dual DSP, 48 Input/16 Output
- (1) Denon DN-C550R Dual Disk CDR-CDRW Recorder
- (1) Denon 635A Compact Disk Recorder
- (1) Sony MDS-E58 Minidisk Recorder/Player
- (1) Panasonic SV-3800 DAT Recorder/Player
- (1) Tascam 122B Cassette Recorder/Player

Power & Loudspeakers:

- (6) EAW SB850F Sub-Bass Loudspeakers (Three per side max, placed on auditorium floor)
- (4) EAW-SB600i Sub-Bass Loudspeakers (Two per side, stereo, bottom of PA stack)
- (8) EAW-KF650z Loudspeakers/EAW MX-8000 Electronic Crossover (Four per side, stereo, Stacked PA)
- (4) EAW-KF600 Loudspeakers/EAW MX-800 Electronic Crossover (Two per side, stereo, Flown PA)
- (2) EAW-KF300 Loudspeakers/EAW MX-200 Electronic Crossover(One per side, stereo, IN FILL/CENTER FILL)
- (2) Crown MA-1200 Power Amplifiers & (1) Crest CA-6 Power Amplifiers (High & Mids)
- (2) Crown MA-2400 Power Amplifiers & (2) Crest CA-9 Power Amplifiers (Mids & Lows)
- (2) Crown MA-3600VZ Power Amplifiers & (1) Crest CA-18 Power Amplifiers (Subs)



THEATER AUDIO SYSTEMS

1/1/2016

Stage Monitor Sound System;

Control:

- (1) AVID-Digidesigns SC48 Digital Audio Mixer with Dual PSU
- (1) TrippLite Smart 1500 Power Conditioner/Battery Back-up
- (1) Tascam CD-RW750 CD Player

Power & Loudspeaker:

- (11) EAW-SMH200iH Floor Wedge Loudspeakers, Passive or Bi-amped
- (2) EAW-SM115iV Floor Wedge Loudspeakers, Passive or Bi-amped
- (11) Crown MA-2402 Power Amplifiers, each fitted with Crown USP2-PIP2 Cards (NO CROSSOVER CONTROL)
- (10) 50' x #12 AWG, NL4-NL4 loudspeaker cables
- (10) 25' x #12 AWG, NL4-NL4 loudspeaker cables
- (5) 10' x #12 AWG, NL4-NL4 loudspeaker cables
- (5) 5' x #12 AWG, NL4-NL4 loudspeaker cables

Microphones & Accessories:

- (10) Shure SM-58 Microphones
- (7) Shure SM-58A Beta Microphones
- (12) Shure SM-57 Microphones
- (5) Shure SM-81 Condenser Microphones
- (3) Nady CM-90 Condenser Microphones
- (1) Shure SM-Beta 87 Microphone
- (3) Sennheiser MD 421U Microphones
- (4) Sennheiser E-604 Microphones
- (3) Sennheiser E-609 Microphones
- (2) AKG D-112 Microphones
- (1) Shure SM-52 Beta Microphone
- (3) Beyer M-88-B Microphones
- (1) Shure SM-Beta 91, Microphone
- (4) Shure Beta-98 H/C Clip-on Mics
- (4) Crown PCC-170GT Microphones

- (8) Shure UR UHF RF Wireless System Receivers, G band frequencies, with Antenna Amplifier
- (6) Shure UR UHF RF Wireless Handheld Microphones fitted with Shure SM-58 Capsules
- (6) Shure UR UHF RF Wireless Lavalier Transmitters, fitted with Shure MX-150B Microphones
- (3) Countyman Isomax E6 Headworn Microphones

- (6) Whirlwind IMP-2 Passive Direct Box
- (6) Countryman #85 Active Direct Box
- (5) DoD 275 Active DI Boxes
- (8) Behringer Ultra DI-100 Active Direct Boxes

Cables & Stands;

- (60-80) Microphone cables, various lengths.
- (30-40) Microphone stands and Booms of various sizes/lengths.



THEATER LIGHTING SYSTEM

1/1/2016

Control;

An ETC Obsession II-1500 Computer Control Console with dual redundant processors and Road Hog4 are networked to control all lighting at the Pabst Theater. The consoles are housed in the FOH control booth with a standard ETCNet and/or ArtNet (Ethernet) connection format to the house dimmers. Both consoles can be located in the auditorium as well. The availability of seven other DMX universes allows automated lighting, color changers, and hazers to be controlled separately from the venues (288) ETC Sensor 2.4 KW dimmers. The ETC console is equipped with a Remote Focus Unit and Remote Video Monitors for use on stage and in the house for focus and cueing purposes and the Hog4 has a wireless remote connection to iPads and other tablet devices. Two Lycian #1267 follow spotlights are permanently housed in the FOH control booth located in the Mezzanine level for those productions that require them. The theater also has the ability to provide electrical service to touring lighting systems and make the needed electrical tie-ins with no special or advance notice.

Dimming;

1200 A, 3 phase, 4-wire w/ground electrical service supplying (288) ETC Sensor 2.4 KW dimmers (Dimmer per circuit)

Distribution;

(288) Hardwired, 20A, stage lighting circuits on stage and in house and (1) Circuit Intercept Panel which intercepts 75% of the FOH circuits and routes then to backstage right. (12) flexible moving light circuits are fed from the stage right wings to allow for intelligent lights to be batten or floor mounted in a variety of stage locations

Other;

The Pabst Theater stage lighting system is also equipped with a 120/240 VAC, 800A, 3 phase, 5-wire company switch for the interconnection of road lighting systems. House staff can perform electrical tie-ins and no special provisions need be made. This electrical service is part of the 1200A, 3-phase service that supplies the house dimming and is NOT in addition to the house dimming service. Cam-Lok connectors terminate in the stage right wings at stage level for easy interconnection.

See pages 19 & 20 for Stage Circuit Plan and Basic House Lighting Hang

The following list reflects the current inventory and may change on a per-show basis.



THEATER LIGHTING INVENTORY

1/1/2016

LEKO's

ETC Source Four Ellipsoidal Reflector Spotlights

- (24) 10° ETC Source Four Ellipsoidal Reflector Spotlight, 575W (permanently located on FOH Rail)
- (16) 19° ETC Source Four Ellipsoidal Reflector Spotlight, 575W (permanently located 8 in each Box Boom)

In addition to these FOH units, we have;

- (50) ETC Source Four Ellipsoidal Reflector Spotlight Bodies (575W cap) to support;

- (8) 19° ETC Source Four lens tubes
- (30) 26° ETC Source Four lens tubes
- (30) 36° ETC Source Four lens tubes
- (4) 50° ETC Source Four lens tube

P.A.R. LIGHTS

ETC Source Four P.A.R. Spotlights

- (48) ETC Source Four PAR Spotlights, 575W, VNSP, NSP, MFL, or WFL lenses available

Altman P.A.R. 64 Spotlights

- (24) Altman P.A.R. 64 Heads, Q 1000 W, MFL Only!

STRIPLIGHTS

- (5) Kliegl 6' x 4 circuit Far Cyc striplights, 2 lamps/color, 500WT2/lamp
- (6) L&E 7' x 3 color Mini-Striplight, MR16/ 75W lamps, with floor trunions

FOLLOW SPOTLIGHTS

- (2) Lycian #1267 Superarcs, 400W HTI lamp, 6 color boomerang

INTELLIGENT LIGHTING FIXTURES (when specifically requested)

- (8) Vari-lite VL-2500S, Spot fixtures, floor or batten mounted

Efx, Haze and Fog

- (1) DF50 Hazer (non-DMX version)



THEATER COMMUNICATIONS SYSTEMS

Telephone System

Each production area and dressing room at the Pabst Theater has a digital telephone line fitted with a multi-function digital telephone AND an analog telephone line to be used with analog devices such as fax machines, answering machines and computer modems.

The telephones have the ability to dial extension telephones within the Pabst Theater by merely dialing the last four digits of the phone number, i.e. 286-2239 to dial "outside" of the Pabst Theater, dial '9' and then the number desired. Calling cards and credit card calls are placed normally after dialing '9'. Numbers dialed thru the analog line by fax machines and/or computer modems must also contain a '9' prior to the dialing string to access an outside line.

DO NOT UNPLUG THE DIGITAL TELEPHONE!! All telephones in the production areas must remain plugged in for the entire communications system to function properly. A "trouble" alarm will sound at our main terminal if a system telephone is unplugged.

IF THE TELEPHONE HAS NO DIAL TONE OR SCREEN FUNCTIONS it is probably unplugged or plugged into the wrong jack. Simply check the cable or change the telephone cable from it's current jack to the jack labeled "Phone" and the telephone dial tone and functions should be restored.

BE CAREFUL TO PLUG YOUR COMPUTER (MODEM) IN TO THE CORRECT JACK!! The telephone jacks are labelled "Phone" for the digital telephones and "Fax/Modem" for analog devices. **PLUGGING YOUR COMPUTER INTO THE DIGITAL JACK (Phone) WILL RESULT IN A DAMAGED MODEM OR WORSE.** The Pabst Theater does not accept any responsibility for your damaged equipment!



THEATER COMMUNICATIONS SYSTEMS

The Internet

The Pabst Theater has a wireless computer network within the production areas, house and lobbies. They will be identified on your computer or handheld devices as "Pabst-Basement", "Pabst-Backstage", or "Pabst-Lobby". Join or log-on to the either of these and you can gain access to the internet. A password is required and will be provided upon load in. There are NO CONTROLS on these network nodes, so remember that pop-ups, spam and other non-desired files, applications or exe's are allowed thru!

There is only one Ethernet jack available to you to interface to the internet and that is in the Travelling Production Office, and as stated above, each production area is fitted with an analog modem jack so you may use your dial-up service if desired.

PLEASE DO NOT SET UP YOUR OWN WIRELESS NETWORK OR TRY TO PLUG ANYTHING INTO OUR NETWORK. THIS WILL NOT WORK AND WILL DISRUPT ALL OTHER WORKING WIRELESS NETWORKING. WE CAN ARRANGE OUR I.T. SPECIALIST TO BE ONSITE TO SET-UP A SPECIFIC NETWORK REQUEST.

Production Communications

Wireless Microphones, In-Ear Monitors and Handheld Radios

Since the Pabst Theater is a downtown theater, nestled between many taller buildings, and a matter of 4 feet from a busy highway, certain types of communications are disrupted, limited or downright BAD. Any and all VHF communications devices such as handheld radios, wireless microphones and am/fm radios seem to work poorly in our location.

UHF devices have a much better track record here at the Pabst, with minor disruption in a few bands of UHF In-Ear Monitors caused by HD television broadcasting in our area. Please see attached frequency spreadsheet to determine if your wireless systems may have interference.

IF YOU ARE USING UHF IN-EAR MONITORS, PLEASE CHECK YOUR FREQUENCIES TO SEE IF THEY ARE IN DIRECT COMPETITION WITH LOCAL UHF or HD TELEVISION IN OUR AREA.

The Pabst Theater has a two channel, wired communications system for use during productions. It is Clear Com based with wired jacks located in all production areas. Headsets, beltpacks and other devices are available for your production. The system can also be simply adapted to your touring system during load in.



STAFF CONTACT NUMBERS

(Dial last four digits as ext. within the Pabst)

Production Telephone Numbers

Pabst Production Office; (Stage Right Wings)	414.286.2239 414.286.0807 414.573.7845	Phone (House PM; Robert Zenoni) Fax Mobile
Star Dressing Room (in Stage Left Wings)	414.286.8424 414.286.0915	Phone Fax/Modem
Lighting Control Booth (Administration Level)	414.286.2230 414.881.8001	Phone (House LD; Jim Fyksen) Mobile
Dressing Room A (Basement S.E.)	414.286.0621 414.286.0616	Phone Fax/Modem
Dressing Room B (Basement S.W.)	414.286.0620 414.286.0615	Phone Fax/Modem
Travelling Production (Basement N.W.)	414.286.0619 414.286.0614	Phone Fax/Modem
Dressing Room C (Basement N.W.)	414.286.0618 414.286.0613	Phone Fax/Modem
Catering Prep (Basement N.E.)	414.286.0617 414.286.0612	Phone Fax /Modem

Pabst NON-Production Telephone Numbers

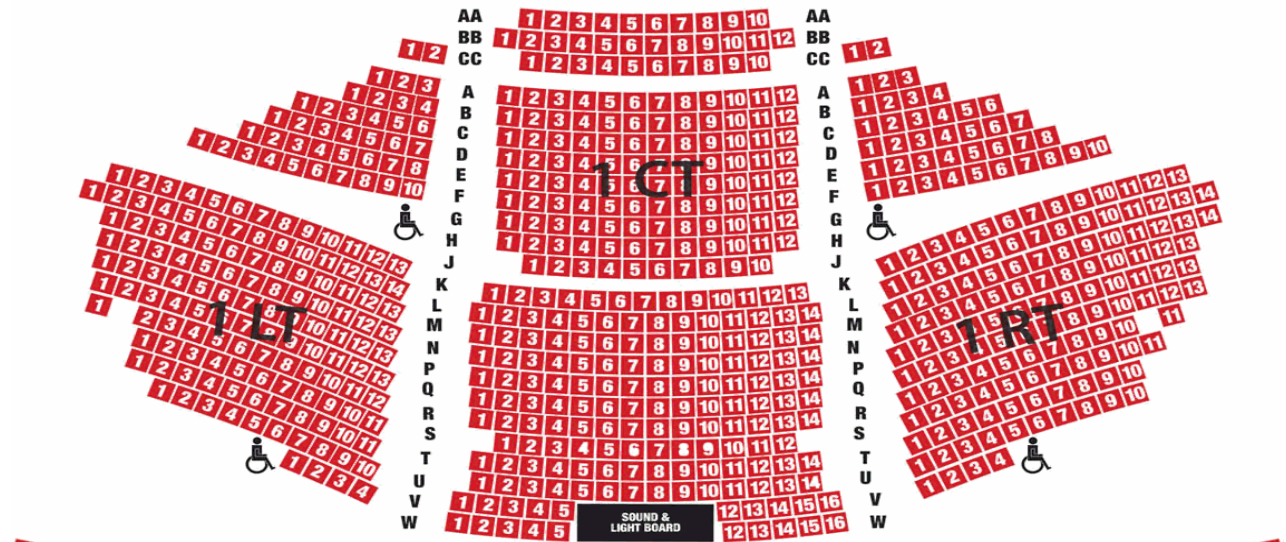
Catering/Hospitality	414.491.6699	Mobile (Paul Smaxwill)
Box Office Manager	414.286.6126	Phone (Hannah Maki)
FOH/Bar Manager;	414.839-1608	Mobile (Brian Conti)
PR Department	414.286.6182 262.391.3203	Phone (Andrew Nelson) Mobile
Management/Settlement	414.286.8384 414.333.6634	Phone (Matt Beringer) Mobile
Management/Settlement	414.286.8302 414.737.3263	Phone (Gary Witt) Mobile
Building Engineering	414.286.3658 317.201.5196	Phone (Joe Huser) Mobile

PABST SEATING PLAN

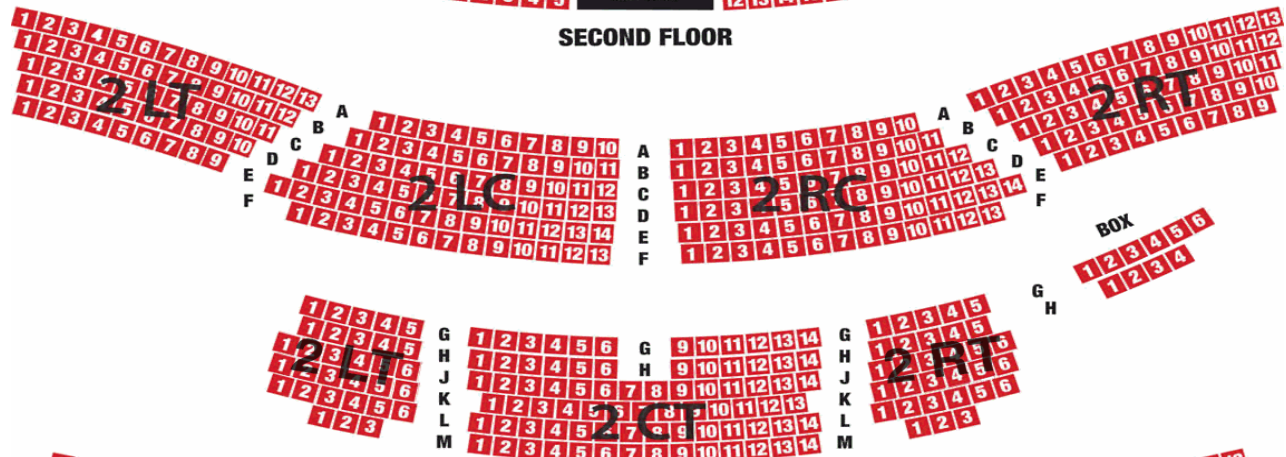
The Pabst

STAGE

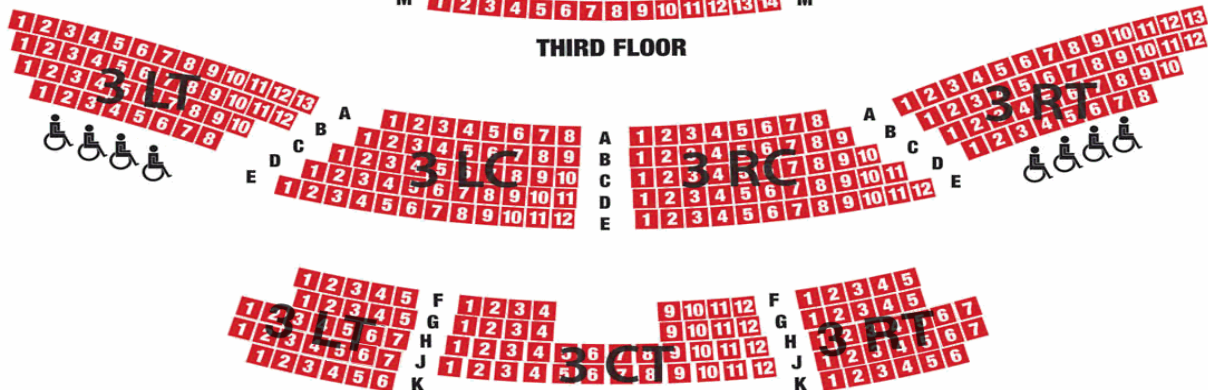
FIRST FLOOR



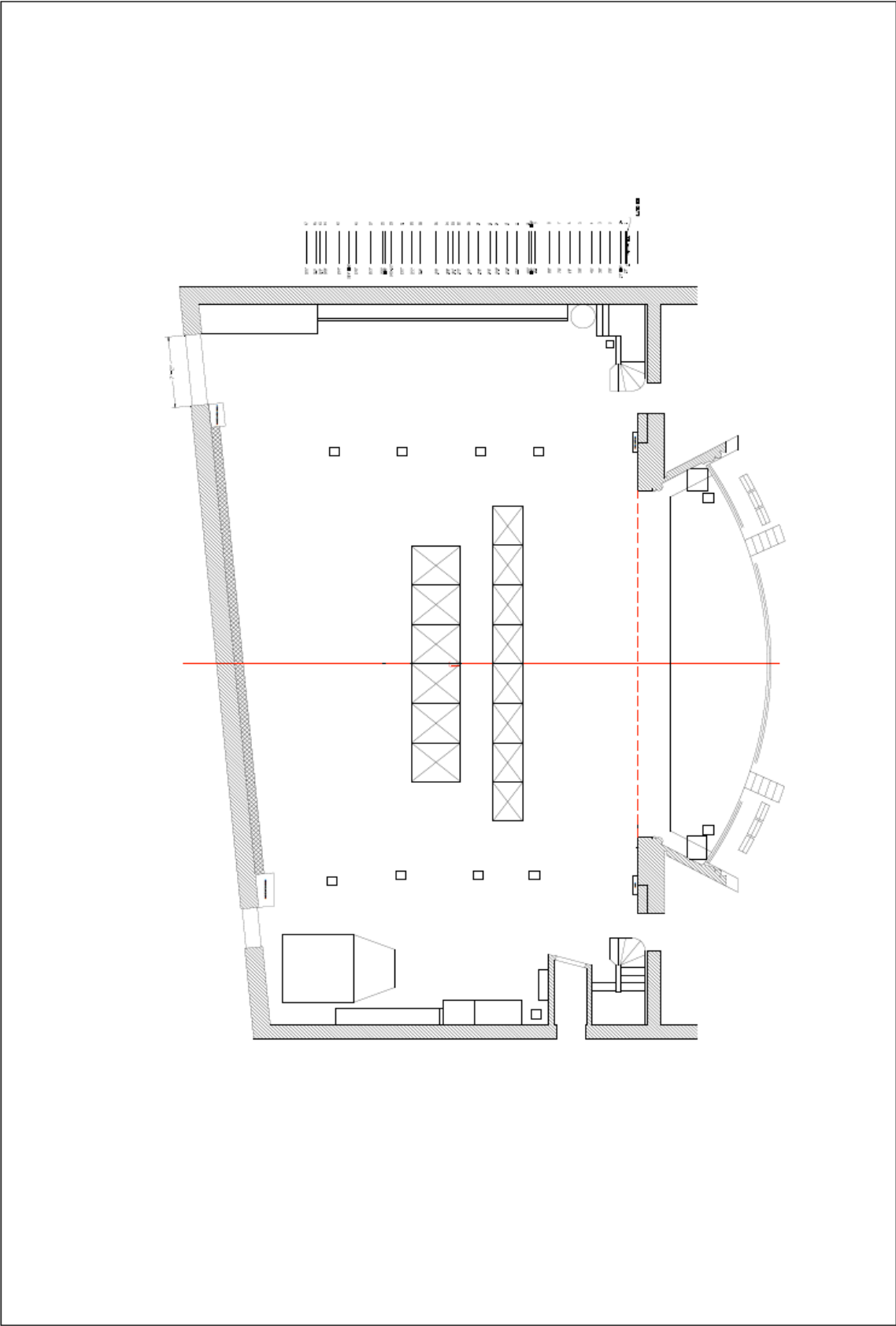
SECOND FLOOR



THIRD FLOOR



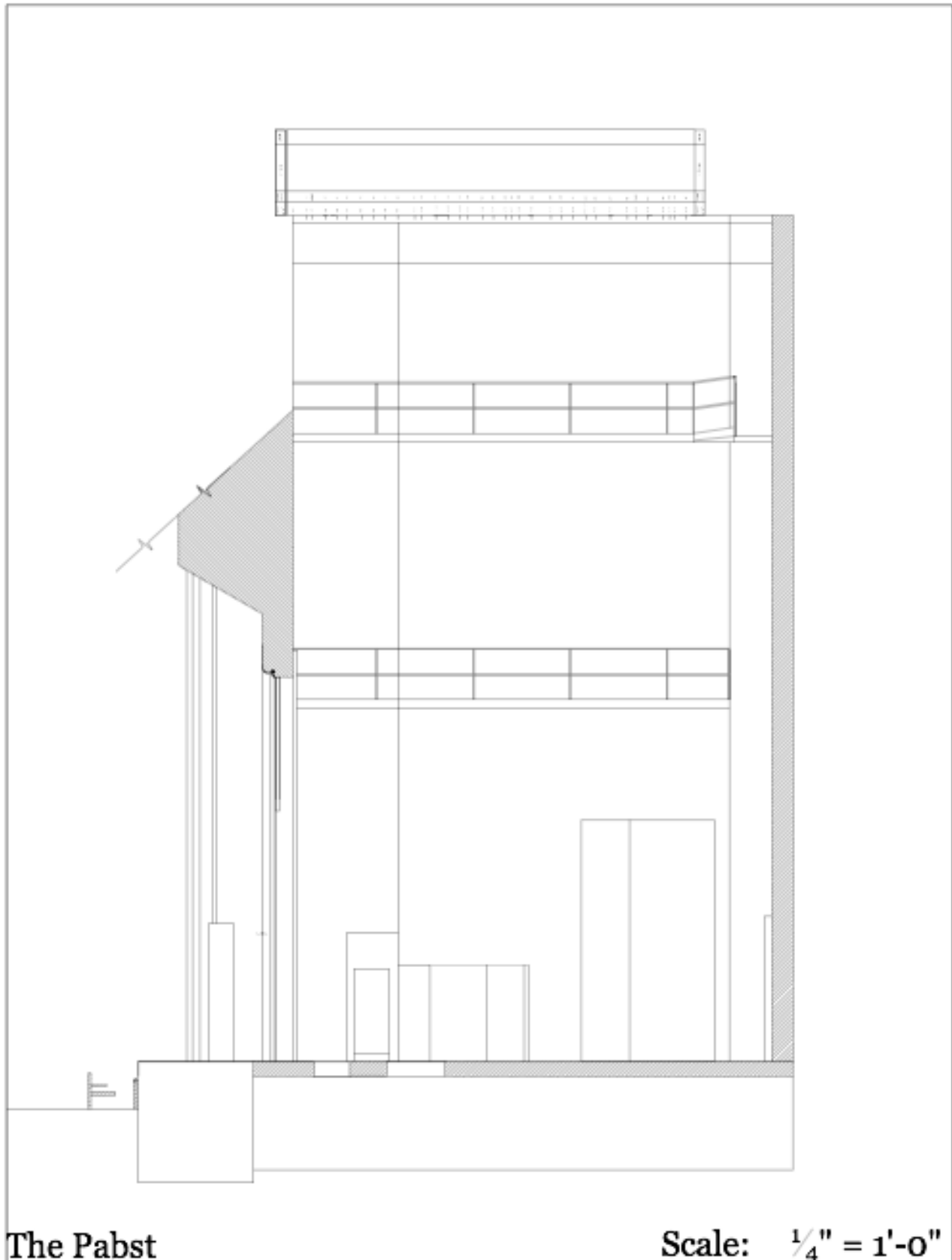
PABST STAGE PLAN



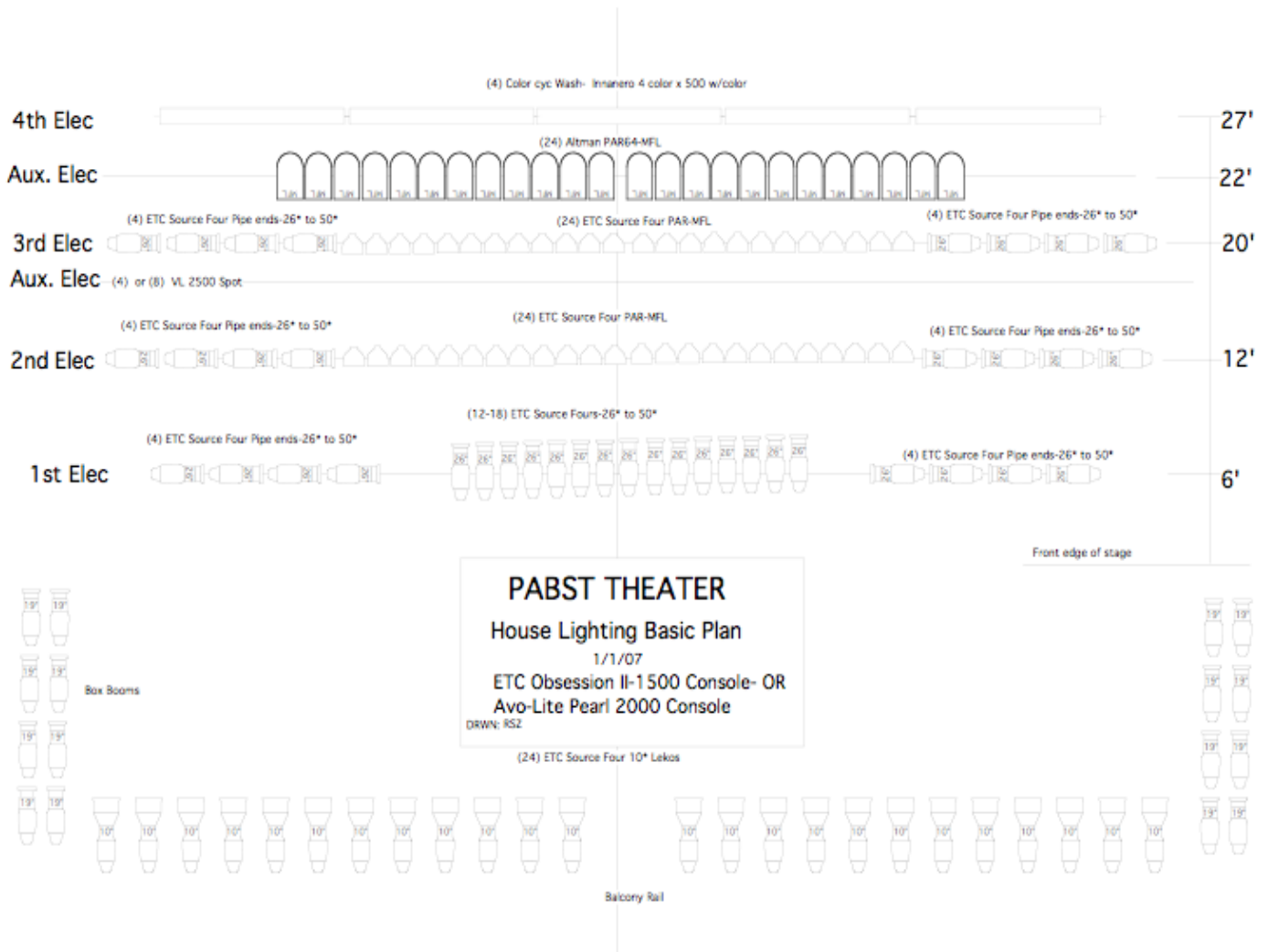
Scale: 1/4" = 1'-0"

The Pabst

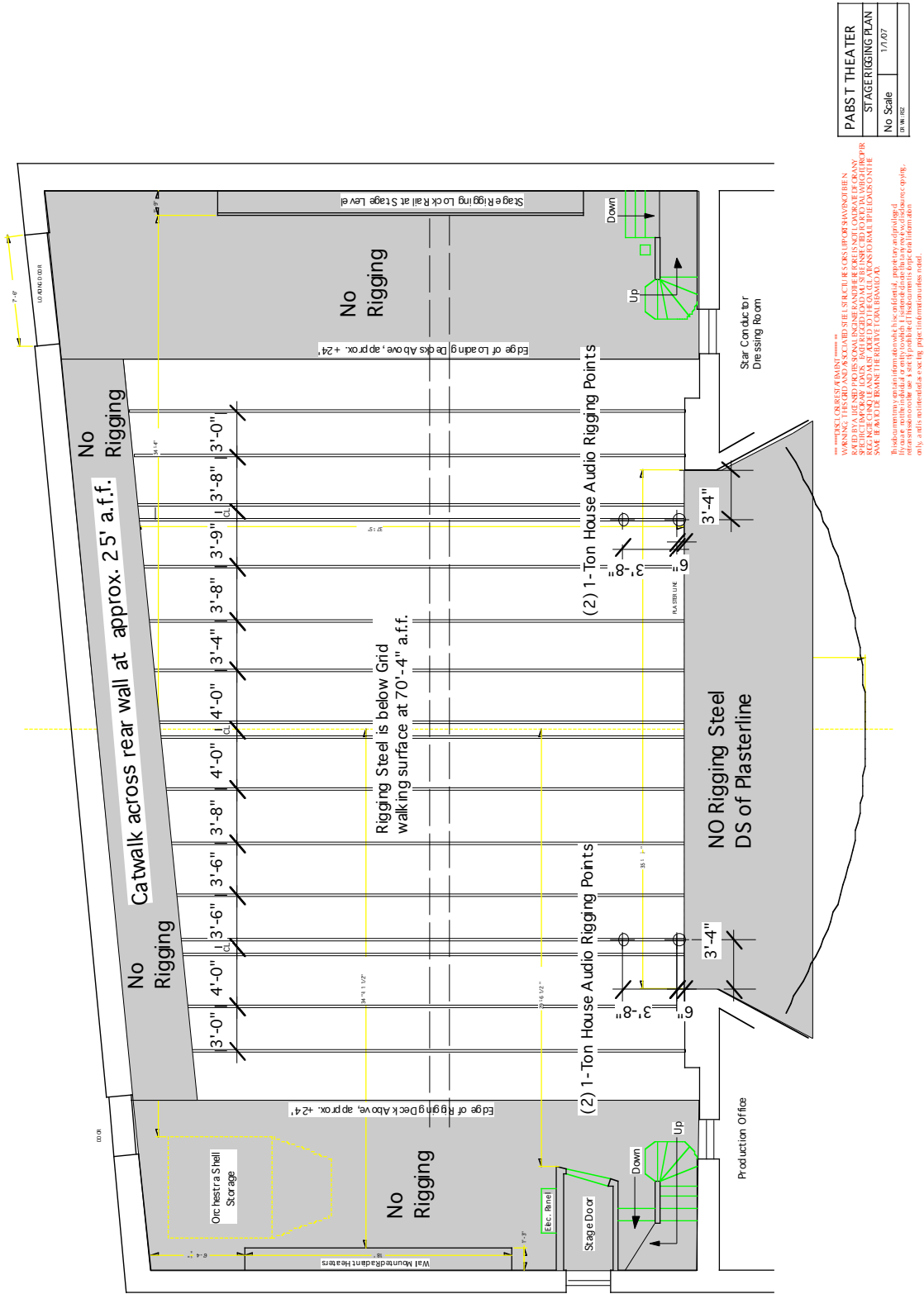
PABST STAGE SECTION VIEW



PABST BASIC LIGHTING HANG



PABST RIGGING STEEL PLAN



THESE CONSTRUCTION DETAILS ARE THE PROPERTY OF THE PABST THEATER. THEY ARE TO BE USED ONLY FOR THE PABST THEATER AND NOT FOR ANY OTHER PROJECT. ANY REUSE OR MODIFICATION OF THESE DETAILS WITHOUT THE WRITTEN PERMISSION OF THE PABST THEATER IS STRICTLY PROHIBITED. THE PABST THEATER ASSUMES NO LIABILITY FOR ANY DAMAGE OR INJURY RESULTING FROM THE USE OF THESE DETAILS.

PABST THEATER	
STAGERIGGING PLAN	
No Scale	1/1/07
1/1/07	

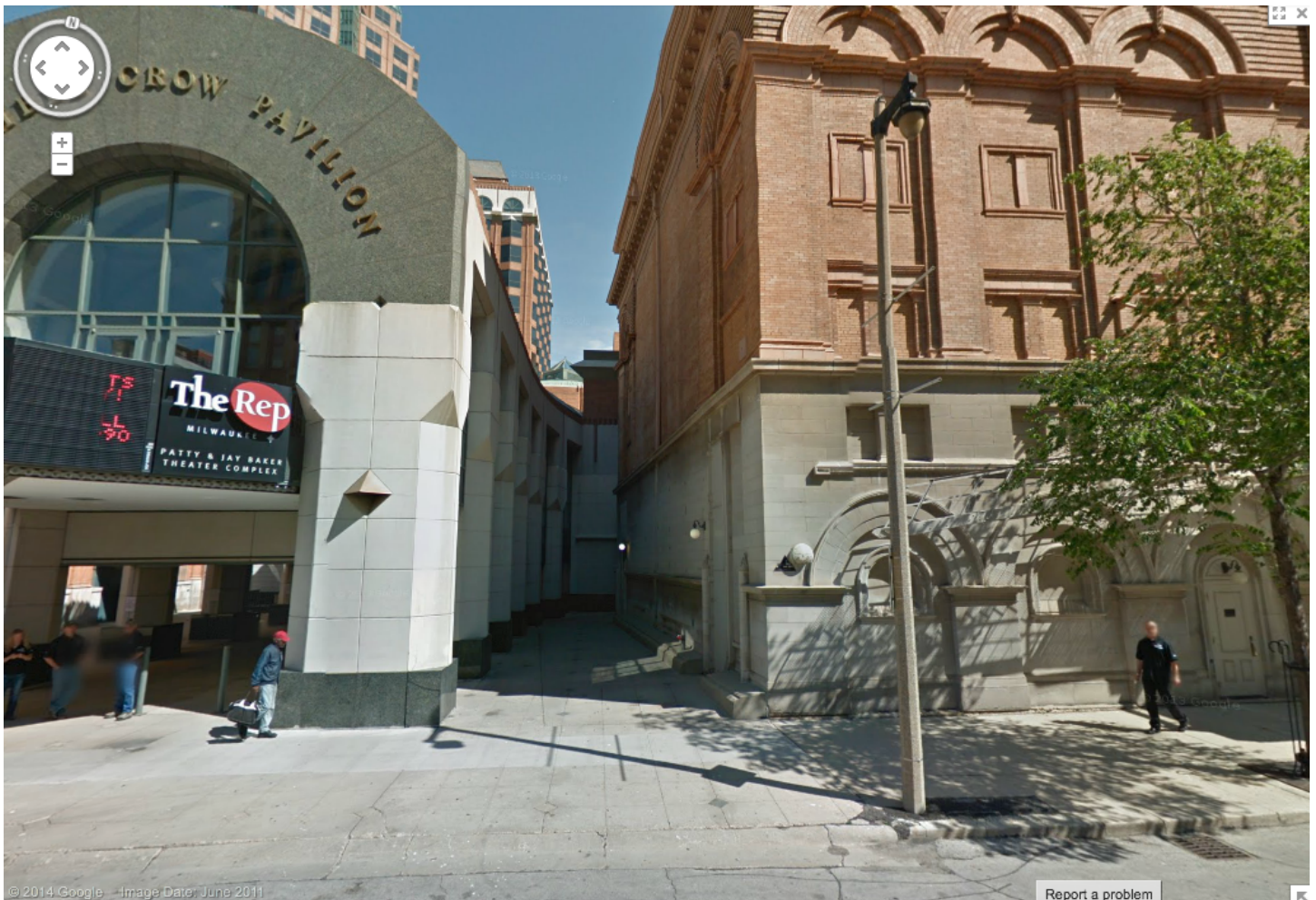
PABST EXTERIOR PHOTOS

The following views are as you approach the theater from the East on Wells street. Although they show a one way street and right turn arrow, the street is now a two way street and you will be parking in the right lane against the curb here. Buses and buses with trailers may park in either direction, whichever better facilitates the loadin/out and passenger access to the coach.





This view is the truck loading zone. Tractor trailers will back into this area between buildings. The trailer must be clear of the sidewalk and the tractor must be disconnected by showtime to allow access across the sidewalk. Tractor parking is usually across the street at hooded parking meters.



PABST THEATER CATERING & HOSPITALITY

The Pabst Theater Catering & Hospitality department is ready to handle all of your catering, hospitality and lodging needs.

Lodging:

The Pabst Theater Group partners with many local Downtown hotels to provide you the best rate for your stay, as close as possible to the theater. Each rooming request is different and the rates depend upon many factors such as quantity, day, date and market volume. Please contact Paul Smaxwill, and let us try to get you the best rate for your stay.

Catering:

At the Pabst Theater, we have our own in house kitchen team which consists of seasoned veteran Chefs from some of the city's best kitchens. Kevin, Lou-Lou and Julie will create and execute a menu designed specifically for your group. They enjoy cooking many style's of cuisine, including Regional American, French and Italian Bistro. Asian and Latin American dishes are also often enjoyed by our guests. We are happy to cater to any dietary restrictions and have a large repertoire of vegetarian and vegan dishes for our non meat/fish-eating friends. After our Catering & Hospitality Manager, Paul Smaxwill, receives your rider, he will work with Chef Kevin and the team to put together a menu based on your tastes and are always happy to retool it according to your feedback. It's our goal to make your time backstage an unforgettable and enjoyable experience.



PABST THEATER CATERING & HOSPITALITY



PABST THEATER CATERING & HOSPITALITY

Hospitality:

The following photomontage depicts the lower level of the stage area, comprising the dressing rooms, beverage/barista station, dining area, and relaxation area. We can comfortably accommodate a large “cast” or tour in the Hospitality Area, with fully appointed dressing rooms, dedicated Production office, a small laundry area and dining/buffet areas. Of course, there is always “down time”, so we have a large compliment of arcade and video games, foosball, cable television and a sound system with many vinyl albums to spin.



Production Office



Barista and Beverage Station



Multi-Table Dining Area



Buffet Line

PABST THEATER CATERING & HOSPITALITY



Large Dressing Room



Laundry Area



Vintage Arcade Games, Foosball, Video Video Games, leather chairs and sofas.

